



Weekend Science Communicator

Role: Weekend Science Communicator

Location: Cambridge Science Centre
Horsefair Shopping Centre, 28 Churchill Road,
Wisbech, PE13 1AR

Reports to: Engagement and Logistics Lead

Contract Type: 6 Months Fixed Term

Salary: £26,250 (pro rata)

Cambridge Science Centre

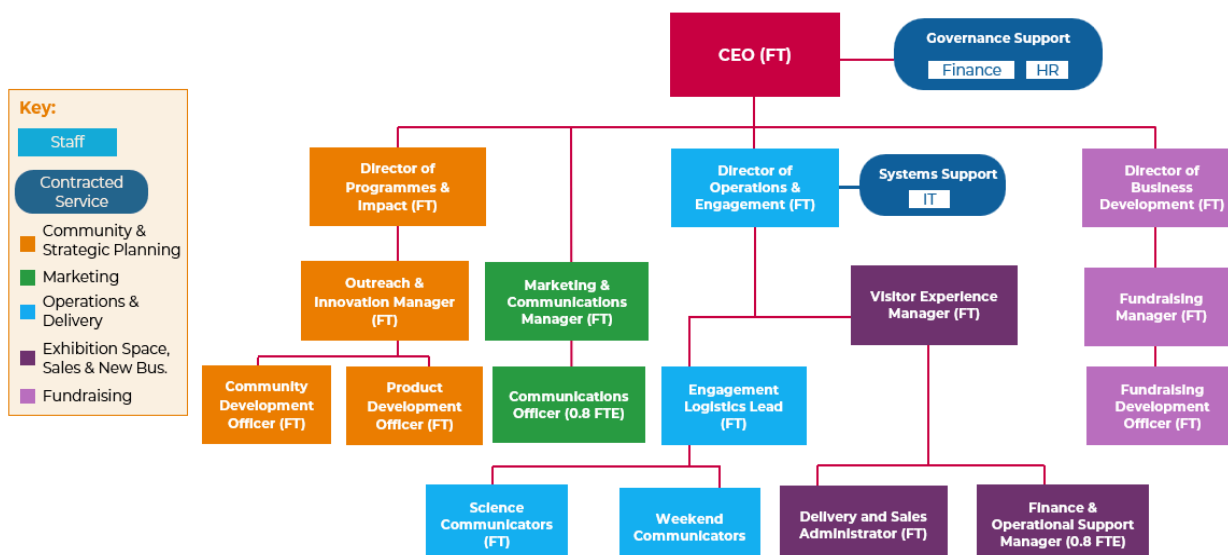
For over ten years, Cambridge Science Centre has been sparking curiosity and a love of STEM (Science, Technology, Engineering and Maths) in young people across the East of England. We focus mainly on ages 4 to 14, because the evidence is clear: building confidence and interest in STEM early on can open up all sorts of opportunities later in life.

Our programmes are designed to be joyful, surprising and genuinely eye-opening—experiences that help young people see themselves and the world in new ways. Through hands-on exploration and open-ended learning, we aim to complement formal education and help every child find what excites them most about STEM.

We develop and deliver a wide range and style of STEM engagement content for young people from early years through to age 16—and we work closely with the parents, carers and educators who play such an important role in their lives.

Each year, around 30,000 young people take part in our activities—whether in schools, communities or at our own centres—and our goal is always the same: to help them imagine and shape a brighter future. With the recent opening of our new permanent venue in Cambridge, alongside continued support through our semi-permanent pop-up centre in Wisbech, we’re now able to build deeper, more sustained relationships with the communities that benefit most from what we offer.

Cambridge Science Centre is an independent educational charity (Registered Charity No. 1146349). You can find out more at www.cambridgesciencecentre.org.



Job Description

Weekend Science Communicators play a vital role in ensuring CSC remains open and accessible to the public when demand is at its highest. A significant portion of our engagement happens on weekends, and in this role, you will help make that possible.

As a Weekend Science Communicator, you're right at the heart of what we do—without Communicators, there is no CSC! Your energy and enthusiasm for STEM will help spark curiosity and excitement in young people, connecting them with science in ways that are fun, meaningful and memorable.

We're looking for someone who's naturally curious, confident engaging with people, and genuinely passionate about making science accessible and enjoyable for everyone.

In this role, you'll work directly with the public and community groups to create engaging STEM experiences. You'll deliver interactive shows, workshops and events, and support open-ended exploration and conversation on the exhibit floor. We'll provide training in public engagement—but it's your personality and style that will bring it all to life. Authenticity is what truly connects with people.

You'll be based at our Fenland Hub in Wisbech. You'll take the lead in setting up and packing down sessions, helping ensure every visitor has a smooth, high-quality experience. You'll also help keep our engagement kit and venue infrastructure in great working order.

Alongside delivering brilliant experiences, you'll help us respond to what audiences need—sharing observations, contributing ideas for new content, and gathering feedback that feeds directly into how we improve. You'll also play a part in promoting the Centre's wider work, pointing visitors to other opportunities they might enjoy, from events and workshops to memberships.

Key Responsibilities

- Create exceptional visitor experiences—positive STEM moments that can change lives!
- Deliver engaging explanations of the STEM concepts behind exhibits, and present shows, workshops, and drop-in activities in a lively, fun, and audience-appropriate manner.
- Contribute to a deeper understanding of CSC's audiences through observation, and by gathering both formal and informal feedback.
- Maintain a clean, tidy, and low-risk environment across our venues, responding promptly and responsibly to any unforeseen issues or incidents.
- Responsible for ensuring that risk assessments are completed and appropriately archived, and that any incidents are promptly reported, effectively managed, and handled in a considerate and constructive manner.

- Promote CSC's products, services, and charitable mission where appropriate, helping to raise awareness and support for the organisation's wider impact.
- Stay up to date with STEM developments and best-in-class science communication practices across the sector.
- Contribute to a positive team and organisational culture by treating others with respect, consideration, and professionalism.
- Undertake administrative work related to the role, including but not limited to:
 - General reporting and action to ensure the equipment is maintained
 - General reporting and action to support the maintenance of quality and accuracy of content
 - Partake in training as planned by the Engagement Logistics Lead
- Undertake other tasks and duties as reasonably required from time to time, such as capturing content for CSC's social media channels.

Person Specification

Essential Criteria

- Excellent verbal and written communication and presentation skills
- A people person: interested in individuals, skilled at active listening and responsive to interests and needs of young people and the adults in their lives
- Driven to deliver timely, high-quality outcomes in everything you do
- A commitment to equity, diversity, and inclusion
- A passion for keeping up-to-date on worldwide developments in science, technology, engineering and maths
- Confidence in handling questions across a broad range of STEM topics
- Strong teamwork skills, allowing you to work with colleagues across the charity during conversations, projects, meetings or other collaborations
- An ability to organise your own time and prioritise tasks as well as to adapt to changing priorities and to respond quickly to requests
- Willing to learn new things and do independent research
- Computer literate
- Achieve a satisfactory enhanced DBS check

Desirable Criteria

- Experience in science communication or working with a range of audiences, including families, adults, and children.
- Customer service skills and experience.
- Level 3 or equivalent qualifications in a STEM subject.
- Full clean driving license.

Working Conditions

The primary location for this role will be our Fenland Hub in the Horsefair Shopping Centre, 28 Churchill Road, Wisbech, PE13 1AR

Advancement Opportunities

Science Communicators and public engagement are at the core of everything CSC does. In this role, you will refine your science communication skills and contribute

valuable insights on what you find works best in different environments and across a range of audiences. A natural progression for Weekend Science Communicators is to move into a permanent Science Communicator role as and when vacancies arise. Your existing experience with CSC would be viewed very positively in any application for a permanent position.

Standard working hours are 7.5 hours per day

Benefits include:

- 25 days + 8 bank-holiday equivalent annual leave (pro-rata)
- Fully funded Medicash health plan, helping cover everyday healthcare costs and giving access to a virtual GP
- Perks at Work membership, offering discounts across retail, travel, entertainment and more
- 10 free CSC tickets each year to enjoy or share with friends and family
- 50% off CSC birthday parties and 20% off in our shop
- Extra annual leave as you grow with us, with additional days at 5, 7 and 10 years
- Mental health support in partnership with BetterHelp

Recruitment Process and Timeline:

To apply for the position of Weekend Communicator at Cambridge Science Centre, please submit your CV and a Cover Letter explaining why you are interested in joining the Centre and how your skills and experience align with the role. Send your application to: jobs@cambridgesciencecentre.org.

At CSC, we're committed to equity, diversity and inclusion in all areas of our work. We actively welcome applications from people of all backgrounds, especially those underrepresented in science engagement.