



# Exhibit Engineer

**Role:** Exhibit Engineer

**Location:** Cambridge Science Centre, 44 Clifton Road, CB1 7ED

**Reports to:** Outreach and Innovation Manager

**Contract Type:** Two-days/week, Permanent

**Salary:** £28,000-30,000 pro-rata (dependent on experience)

## Cambridge Science Centre

For over ten years, Cambridge Science Centre has been sparking curiosity and a love of STEM (Science, Technology, Engineering and Maths) in young people across the East of England. We focus mainly on ages 4 to 14, because the evidence is clear: building confidence and interest in STEM early on can open up all sorts of opportunities later in life.

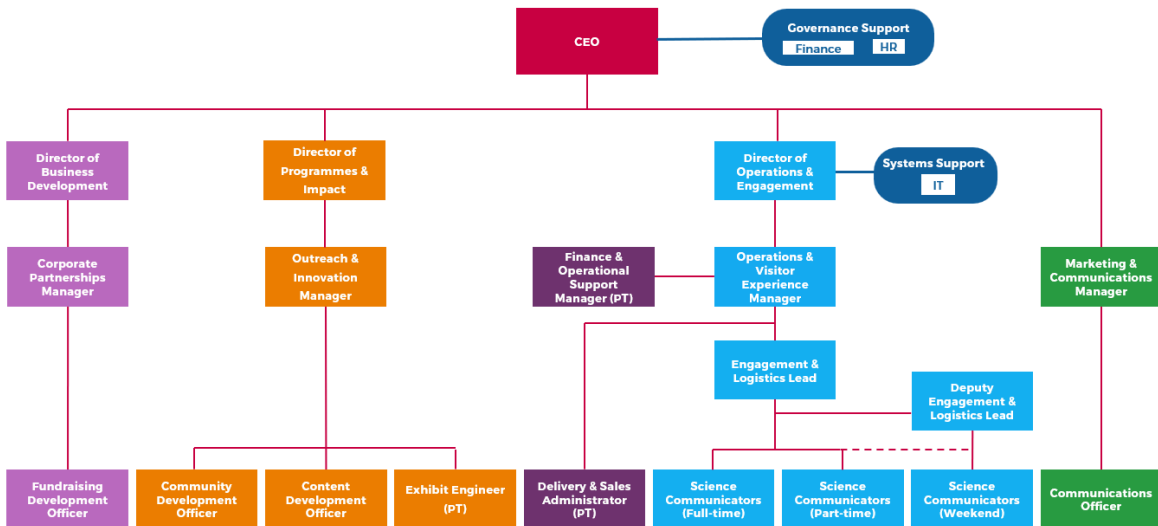
Our programmes are designed to be joyful, surprising and genuinely eye-opening—experiences that help young people see themselves and the world in new ways. Through hands-on exploration and open-ended learning, we aim to complement formal education and help every child find what excites them most about STEM.

We develop and deliver a wide range and style of STEM engagement content for young people from early years through to age 16—and we work closely with the parents, carers and educators who play such an important role in their lives.

Each year, around 30,000 young people take part in our activities—whether in schools, communities or at our own centres—and our goal is always the same: to help them imagine and shape a brighter future. With the recent opening of our new permanent venue in Cambridge, alongside continued support through our semi-permanent pop-up centre in Wisbech, we’re now able to build deeper, more sustained relationships with the communities that benefit most from what we offer.

Cambridge Science Centre is an independent educational charity (Registered Charity No. 1146349). You can find out more at [www.cambridgesciencecentre.org](http://www.cambridgesciencecentre.org).

## Organisational Chart:



## **Job Description**

You will maintain the innovative and dynamic STEM (Science, Technology, Engineering, and Mathematics) exhibits that are the core of CSC's venues (Cambridge and Wisbech). You will also support the development of kit (demonstration props and hands-on equipment for use by young people) for CSC's content (e.g., shows, lab activities, and workshops) and the set-up and maintenance of CSC's venues.

Working closely with the Outreach and Innovation Manager and the Content Development Officer, and in collaboration with the Operations and Engagement team, you'll take a creative, audience-focused approach to the exhibits and content, ensuring they deliver measurable learning outcomes across a diverse range of audiences.

In addition, you will work with the Outreach and Innovation Manager to ensure all exhibits and kits are safe and have suitable maintenance schedules. You will carry-out or organise maintenance associated tasks (e.g., PAT testing), evaluate archived exhibits and identify potential upgrades, create and maintain associated documentation of exhibits and content, and collaborate with third-party teams on exhibit and content development.

Exhibits are made with diverse concepts and materials, and many include electronic and computer elements. We welcome candidates from all professional and hobbyist backgrounds, including those with experience in industry. While prior experience in an educational setting is not essential, a strong interest in science communication and public engagement is essential.

## **Key Responsibilities**

- Evaluate and review CSC's catalogue of working and archived exhibits.
- Maintain, repair, or upgrade physical exhibit components and interactive kits using a variety of materials, including wood, metal, plastics, and electronics to maximise the working catalogue.
- Transport to and assemble and secure exhibits at CSC venues and perform inspections, troubleshoot issues, and repair broken or worn-out parts.
- Ensure all exhibits and kits meet strict health and safety standards and are accessible.
- Collaborate with the Content Development Officer to identify and develop/procure kit for content (e.g., shows, workshops).
- Collaborate with the Outreach and Innovation Manager to define what constitutes a complete product — including health and safety, risk assessments, testing, training, usage manuals, and maintenance guides — and ensure all exhibits and content meet this standard.
- Support the training and review sessions with the Engagement Team to ensure all staff are fully trained and confident in delivering and doing exhibit care and basic maintenance.
- Provide support to CSC colleagues in partner meetings, where relevant, to help define product specifications and development schedules.
- Research, review, and benchmark public-facing materials to ensure they meet high standards of quality, accuracy, and engagement.

- Identify new sources for exhibits and demonstrations, with a focus on quality and cost-effectiveness.
- Foster strong relationships across internal teams to support collaborative, efficient, and effective workflows.
- **As capacity allows**, collaborate with the Marketing and Communications Manager to create content for public audiences, to be featured in reports, on social media, and on the CSC website.

## **Person Specification**

### *Essential Criteria*

- Demonstrated creativity in problem-solving with a creative, "maker" mindset to solve mechanical and technical problems and to make complex scientific concepts intuitive and visible.
- Strong working knowledge of carpentry, metalworking, machining, and basic electronics.
- An ability to read and interpret 3D CAD models, blueprints, and technical drawings.
- Excellent communication skills to coordinate between content creators, engagement experts, and external workshop teams.
- A strong interest in learning paradigms and a passion for hands-on science education.
- Excellent organisational skills, with the ability to work independently and manage multiple priorities.
- Evidence of costing out work and operating within a defined budget.
- Driven to deliver high-quality outcomes in everything you do.
- A commitment to equity, diversity, and inclusion.
- A strong interest in keeping up-to-date on worldwide developments in science, technology, engineering, and maths.
- Computer literate.
- Achieve a satisfactory enhanced DBS check.

### *Desirable Criteria*

- Training in health and safety and risk assessment production.
- Training in technology or a technology hobbyist (e.g., Raspberry Pi).
- Working knowledge of current developments in hands-on science engagement techniques across a range of formats and settings.
- Experience in science content development, either from an industry perspective or science outreach.
- Level 3 or equivalent qualifications in a STEM subject.
- Full clean driving license.

## **Working Conditions**

The primary locations for this role will be Cambridge Science Centre's Head Office at 44 Clifton Road, Cambridge, CB1 7ED (assigned desk or workspace) and the Cambridge Science Centre at Trinity Centre, Cambridge Science Park, CB4 0FN (hotdesking model).

In addition, there will be some travel to the semi-permanent centre (Wisbech Centre, Wisbech, PE13 1AR) and, on occasion, a variety of locations across the East of England, including schools and community venues.

We offer the option of flexible hybrid working where and when possible.

### **Advancement Opportunities**

CSC invests in its staff through a structured career planning framework that includes training, leadership opportunities, and the chance to gain experience in areas such as operations, marketing, fundraising, business and partnership development, and technical specialisms. Individual development opportunities are reviewed annually as part of this ongoing commitment.

### **Standard working hours are 7.5 hours per day**

Parking and bike storage are available at both CSC locations.

### **Benefits include:**

- 25 days annual leave, plus Bank Holidays (pro rata)
- Mental health support in partnership with BetterHelp
- Contributory pension scheme

### **Recruitment Process and Timeline:**

To apply for the position of Exhibit Engineer at Cambridge Science Centre, please submit your CV and a Cover Letter explaining why you are interested in joining the Centre and how your skills and experience align with the role. Send your application to: [jobs@cambridgesciencecentre.org](mailto:jobs@cambridgesciencecentre.org).

At CSC, we're committed to equity, diversity and inclusion in all areas of our work. We actively welcome applications from people of all backgrounds, especially those underrepresented in science engagement.